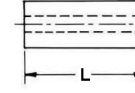
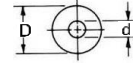
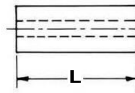
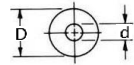


Round Spacers I/d-2.6mm - I/d-5.3mm Natural Nylon



d	D	L
2.6	4.0	2.0
2.6	4.0	3.0
2.6	4.0	4.0
2.6	4.0	5.0
2.6	4.0	6.0
2.6	4.0	7.0
2.6	4.0	8.0
2.6	4.0	9.0
2.6	4.0	10.0
2.6	4.0	11.0
2.6	4.0	12.0
2.6	4.0	13.0
2.6	4.0	14.0
2.6	4.0	15.0
2.6	4.0	16.0
2.6	4.0	17.0
2.6	4.0	18.0
2.6	4.0	19.0
2.6	4.0	20.0
2.6	4.0	21.0
2.6	4.0	22.0
2.6	4.0	23.0
2.6	4.0	24.0
2.6	4.0	25.0
2.6	4.0	26.0
2.6	4.0	27.0
2.6	4.0	28.0
2.6	4.0	29.0
2.6	4.0	30.0
3.2	5.0	2.0
3.2	5.0	3.0
3.2	5.0	4.0
3.2	5.0	5.0
3.2	5.0	6.0
3.2	5.0	7.0
3.2	5.0	8.0
3.2	5.0	9.0
3.2	5.0	10.0
3.2	5.0	11.0
3.2	5.0	12.0
3.2	5.0	13.0
3.2	5.0	14.0
3.2	5.0	15.0
3.2	5.0	16.0
3.2	5.0	17.0
3.2	5.0	18.0
3.2	5.0	19.0
3.2	5.0	20.0
3.2	5.0	21.0
3.2	5.0	22.0
3.2	5.0	23.0
3.2	5.0	24.0
3.2	5.0	25.0
3.2	5.0	26.0
3.2	5.0	27.0
3.2	5.0	28.0
3.2	5.0	29.0
3.2	5.0	30.0

d	D	L
3.2	6.0	2.0
3.2	6.0	3.0
3.2	6.0	4.0
3.2	6.0	5.0
3.2	6.0	6.0
3.2	6.0	7.0
3.2	6.0	8.0
3.2	6.0	9.0
3.2	6.0	10.0
3.2	6.0	11.0
3.2	6.0	12.0
3.2	6.0	13.0
3.2	6.0	14.0
3.2	6.0	15.0
3.2	6.0	16.0
3.2	6.0	17.0
3.2	6.0	18.0
3.2	6.0	19.0
3.2	6.0	20.0
3.2	6.0	21.0
3.2	6.0	22.0
3.2	6.0	23.0
3.2	6.0	24.0
3.2	6.0	25.0
3.2	6.0	26.0
3.2	6.0	27.0
3.2	6.0	28.0
3.2	6.0	29.0
3.2	6.0	30.0
3.2	8.0	3.0
3.2	8.0	4.0
3.2	8.0	5.0
3.2	8.0	6.0
3.2	8.0	7.0
3.2	8.0	8.0
3.2	8.0	9.0
3.2	8.0	10.0
3.2	8.0	11.0
3.2	8.0	12.0
3.2	8.0	13.0
3.2	8.0	14.0
3.2	8.0	15.0
3.2	8.0	16.0
3.2	8.0	17.0
3.2	8.0	18.0
3.2	8.0	19.0
3.2	8.0	20.0
3.2	8.0	21.0
3.2	8.0	22.0
3.2	8.0	23.0
3.2	8.0	24.0
3.2	8.0	25.0
3.2	8.0	26.0
3.2	8.0	27.0
3.2	8.0	28.0
3.2	8.0	29.0
3.2	8.0	30.0

d	D	L
3.6	6.0	2.0
3.6	6.0	3.0
3.6	6.0	4.0
3.6	6.0	5.0
3.6	6.0	6.0
3.6	6.0	7.0
3.6	6.0	8.0
3.6	6.0	9.0
3.6	6.0	10.0
3.6	6.0	11.0
3.6	6.0	12.0
3.6	6.0	13.0
3.6	6.0	14.0
3.6	6.0	15.0
3.6	6.0	16.0
3.6	6.0	17.0
3.6	6.0	18.0
3.6	6.0	19.0
3.6	6.0	20.0
3.6	6.0	21.0
3.6	6.0	22.0
3.6	6.0	23.0
3.6	6.0	24.0
3.6	6.0	25.0
3.6	6.0	26.0
3.6	6.0	27.0
3.6	6.0	28.0
3.6	6.0	29.0
3.6	6.0	30.0
4.3	8.0	2.0
4.3	8.0	3.0
4.3	8.0	4.0
4.3	8.0	5.0
4.3	8.0	6.0
4.3	8.0	7.0
4.3	8.0	8.0
4.3	8.0	9.0
4.3	8.0	10.0
4.3	8.0	11.0
4.3	8.0	12.0
4.3	8.0	13.0
4.3	8.0	14.0
4.3	8.0	15.0
4.3	8.0	16.0
4.3	8.0	17.0
4.3	8.0	18.0
4.3	8.0	19.0
4.3	8.0	20.0
4.3	8.0	21.0
4.3	8.0	22.0
4.3	8.0	23.0
4.3	8.0	24.0
4.3	8.0	25.0
4.3	8.0	26.0
4.3	8.0	27.0
4.3	8.0	28.0
4.3	8.0	29.0
4.3	8.0	30.0

d	D	L
4.3	10.0	2.0
4.3	10.0	3.0
4.3	10.0	4.0
4.3	10.0	5.0
4.3	10.0	6.0
4.3	10.0	7.0
4.3	10.0	8.0
4.3	10.0	9.0
4.3	10.0	10.0
4.3	10.0	11.0
4.3	10.0	12.0
4.3	10.0	13.0
4.3	10.0	14.0
4.3	10.0	15.0
4.3	10.0	16.0
4.3	10.0	17.0
4.3	10.0	18.0
4.3	10.0	19.0
4.3	10.0	20.0
4.3	10.0	21.0
4.3	10.0	22.0
4.3	10.0	23.0
4.3	10.0	24.0
4.3	10.0	25.0
4.3	10.0	26.0
4.3	10.0	27.0
4.3	10.0	28.0
4.3	10.0	29.0
4.3	10.0	30.0
4.3	12.0	2.0
4.3	12.0	3.0
4.3	12.0	4.0
4.3	12.0	5.0
4.3	12.0	6.0
4.3	12.0	7.0
4.3	12.0	8.0
4.3	12.0	9.0
4.3	12.0	10.0
4.3	12.0	11.0
4.3	12.0	12.0
4.3	12.0	13.0
4.3	12.0	14.0
4.3	12.0	15.0
4.3	12.0	16.0
4.3	12.0	17.0
4.3	12.0	18.0
4.3	12.0	19.0
4.3	12.0	20.0
4.3	12.0	21.0
4.3	12.0	22.0
4.3	12.0	23.0
4.3	12.0	24.0
4.3	12.0	25.0
4.3	12.0	26.0
4.3	12.0	27.0
4.3	12.0	28.0
4.3	12.0	29.0
4.3	12.0	30.0

d	D	L
5.2	8.0	2.0
5.2	8.0	3.0
5.2	8.0	4.0
5.2	8.0	5.0
5.2	8.0	6.0
5.2	8.0	7.0
5.2	8.0	8.0
5.2	8.0	9.0
5.2	8.0	10.0
5.2	8.0	12.0
5.2	8.0	13.0
5.2	8.0	14.0
5.2	8.0	15.0
5.2	8.0	16.0
5.2	8.0	17.0
5.2	8.0	18.0
5.2	8.0	19.0
5.2	8.0	20.0
5.2	8.0	21.0
5.2	8.0	22.0
5.2	8.0	23.0
5.2	8.0	24.0
5.2	8.0	25.0
5.2	8.0	26.0
5.2	8.0	27.0
5.2	8.0	28.0
5.2	8.0	29.0
5.2	8.0	30.0
5.2	8.0	31.0
5.2	8.0	32.0
5.2	8.0	33.0
5.2	8.0	34.0
5.2	8.0	35.0
5.2	8.0	36.0
5.2	8.0	37.0
5.2	8.0	38.0
5.2	8.0	39.0
5.2	8.0	40.0
5.2	8.0	41.0
5.2	8.0	42.0
5.2	8.0	43.0
5.2	8.0	44.0
5.2	8.0	45.0
5.2	8.0	46.0
5.2	8.0	47.0
5.2	8.0	48.0
5.2	8.0	49.0
5.2	8.0	50.0
5.3	10.0	2.0
5.3	10.0	3.0
5.3	10.0	4.0
5.3	10.0	5.0
5.3	10.0	6.0
5.3	10.0	7.0
5.3	10.0	8.0
5.3	10.0	9.0
5.3	10.0	10.0
5.3	10.0	11.0
5.3	10.0	12.0
5.3	10.0	13.0
5.3	10.0	14.0
5.3	10.0	15.0
5.3	10.0	16.0
5.3	10.0	17.0
5.3	10.0	18.0
5.3	10.0	19.0
5.3	10.0	20.0
5.3	10.0	21.0
5.3	10.0	22.0
5.3	10.0	23.0
5.3	10.0	24.0
5.3	10.0	25.0
5.3	10.0	26.0
5.3	10.0	27.0
5.3	10.0	28.0
5.3	10.0	29.0
5.3	10.0	30.0
5.3	10.0	31.0
5.3	10.0	32.0
5.3	10.0	33.0
5.3	10.0	34.0
5.3	10.0	35.0
5.3	10.0	36.0
5.3	10.0	37.0
5.3	10.0	38.0
5.3	10.0	39.0
5.3	10.0	40.0

d	D	L
5.3	10.0	11.0
5.3	10.0	12.0
5.3	10.0	13.0
5.3	10.0	14.0
5.3	10.0	15.0
5.3	10.0	16.0
5.3	10.0	17.0
5.3	10.0	18.0
5.3	10.0	19.0
5.3	10.0	20.0
5.3	10.0	21.0
5.3	10.0	22.0
5.3	10.0	23.0
5.3	10.0	24.0
5.3	10.0	25.0
5.3	10.0	26.0
5.3	10.0	27.0
5.3	10.0	28.0
5.3	10.0	29.0
5.3	10.0	30.0
5.3	10.0	31.0
5.3	10.0	32.0
5.3	10.0	33.0
5.3	10.0	34.0
5.3	10.0	35.0
5.3	10.0	36.0
5.3	10.0	37.0
5.3	10.0	38.0
5.3	10.0	39.0
5.3	10.0	40.0

Further Combinations With Regards To Sizes Are Available On Request